



Arinda Internet Accessing database data



Introduction

All Surf Easy and Serve Easy (formally CR-POS) software written by Arinda utilise database files operating under Microsoft SQL Server Express 2005.

The database files are stored locally on your PC, usually in the following location:

c:\Program Files\Microsoft SQL Server\MSSQL.1\MSSQL\Data\

Most program data is stored in the database CRLocal (formally CRPOS). Each database consists of 2 files – an mdf file (data file), and a ldf file (log file).

The instructions below detail how to open and access this data.

Please note that the first time you attempt this process on a new PC it does require some time to be spent installing new applications.

Step 1 – If necessary, copy the database files to the PC you would like to work on

If necessary, you can copy the database files to a separate PC so as to keep the main PC operational. To do this, simply follow these steps:

1. From the Start menu, open Windows Explorer (e.g. Click on the "My Computer" link).
2. In the Address bar at the top of the screen, type:
c:\Program Files\Microsoft SQL Server\MSSQL.1\MSSQL\Data\
3. Locate the files beginning with CR and copy these to a disc.
4. You now have a backup copy of your database.

Step 2 – If necessary, install Microsoft SQL Server Express 2005 on your alternate PC

In order to access the database you must have Microsoft SQL Server Express installed on your PC. This is already installed on any PC running Surf Easy or Serve Easy, but if you would like to open the database file on another PC then you will need to ensure that Microsoft SQL Server Express is installed first.

1. If you have the original install CD for your Surf Easy or Serve Easy software, then you should be able to find a copy of Microsoft SQL Server Express 2005 in the sub-folder called "sqlexpr". Simply open that folder and run the file "setup.bat"
2. Otherwise, or if you would prefer to get the latest version, simply go to the following URL and download Microsoft SQL Server Express directly from our website:

<http://www.surfeasy.net.au/updates/drivers/sqlexpr.zip>

The download is approximately 71MB, so it may take some time to download depending on the speed of your Internet connection.

Once the download is complete, unzip the folder and run the file "setup.bat". Reboot your PC when the installation has finished.

Step 3 – If necessary, install SQL Server Management Service Express on your PC

In order to open and view the database you must have SQL Server Management Service Express installed on your PC.

1. If you have the original install CD for your Surf Easy or Serve Easy software, then you should be able to find a copy of Microsoft SQL Server Express 2005 in the sub-folder called "Extras\SQL Server Management Service Express". Simply open that folder and run the file "SQLServer2005_SSMSEE.msi"
2. Otherwise, or if you would prefer to get the latest version, simply go to the following URL and download SQL Server Management Service Express directly from our website:

http://www.surfeasy.net.au/updates/drivers/SQLServer2005_SSMSEE.msi

The download is approximately 44 MB, so it may take some time to download depending on the speed of your Internet connection.

Once the download is complete, simply run the file "SQLServer2005_SSMSEE.msi"

Step 4 – Attach the database files to the SQL Server

Now that you have Microsoft SQL Server Express 2005 and SQL Server Management Service Express installed on your PC, the next step is to "attach" the database files to the database server.

Method 1 – Automated Process

1. Create a new folder on your C: drive called "db" (i.e. C:\db\)
2. Copy the database files you copied from your terminal in Step 1 (i.e. the CRLocal or CRPOS files) into this new "db" folder
3. Download the automated attachment program from our website, and save it in the [c:\](#) drive (important – do not save it to any other location).

<http://www.surfeasy.net.au/updates/drivers/attachdb.exe>

4. Run this download, attachdb.exe
5. The program will briefly show a window and then close after about 30 seconds.
6. Your database files should now be attached to the database server.

Method 2 – Manual Process

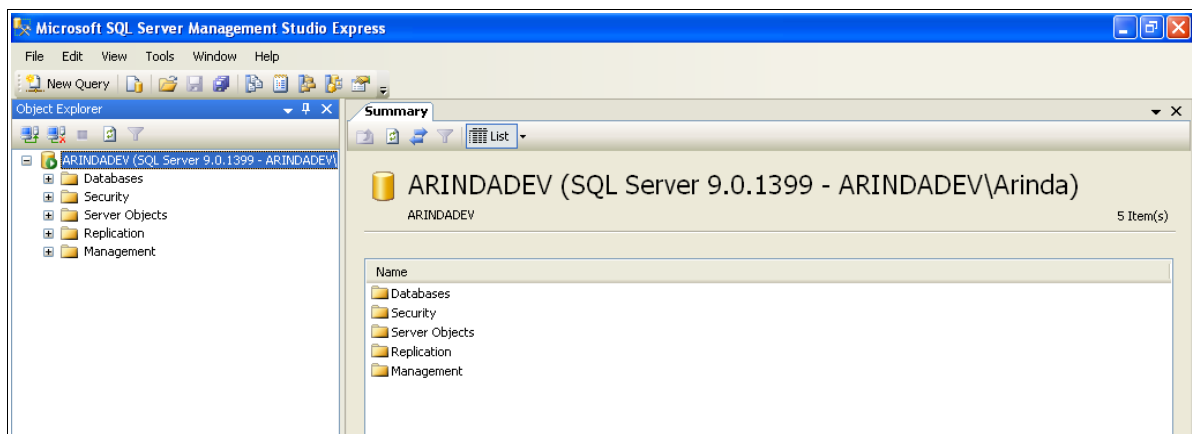
1. Copy the database files you copied from your terminal in Step 1 (i.e. the CRLocal or CRPOS files) into the following folder:

c:\Program Files\Microsoft SQL Server\MSSQL.1\MSSQL\Data\

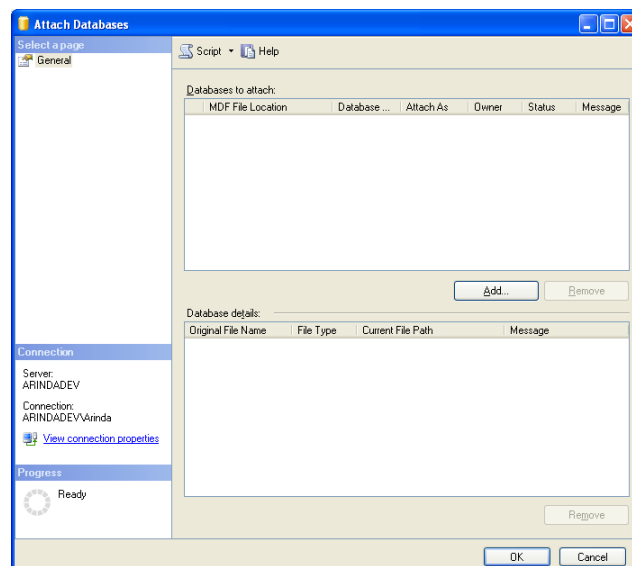
2. Go to the Start menu and open the menu item "Microsoft SQL Server 2005", then click on "SQL Server Management Studio Express CTP"
3. You should now see a window similar to the one below, but your computer name will appear in the Server Name field.



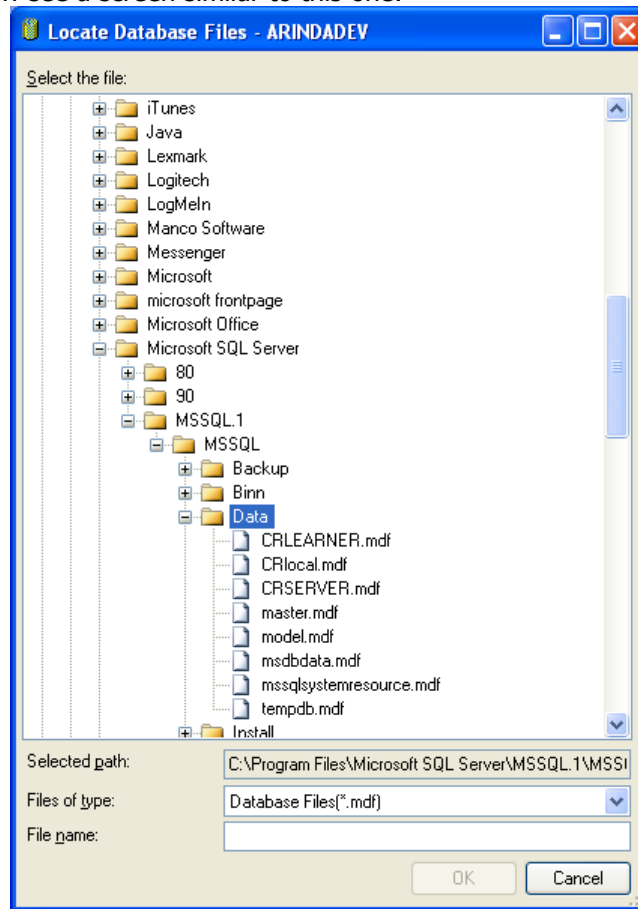
4. Simply press "Connect"
5. You should now see a screen similar to this one:



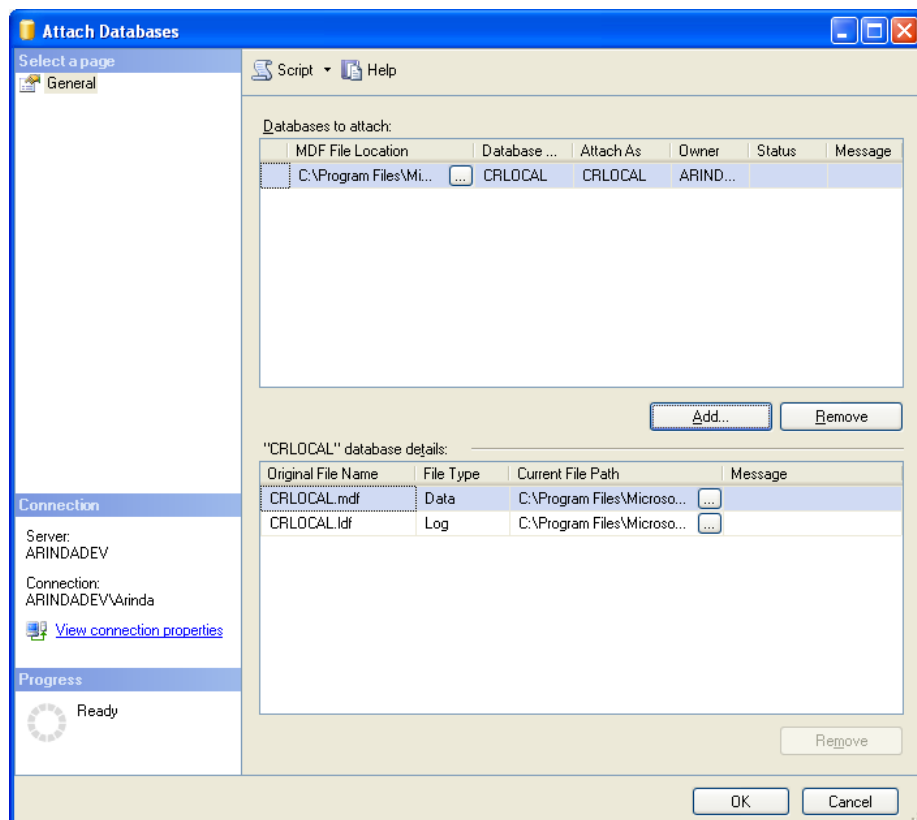
6. In the Object Explorer panel on the left hand side of the screen, right click on the item "Databases" and choose "Attach"
7. You should now see a screen similar to this one:



8. Click the "Add..." button
9. You should now see a screen similar to this one:

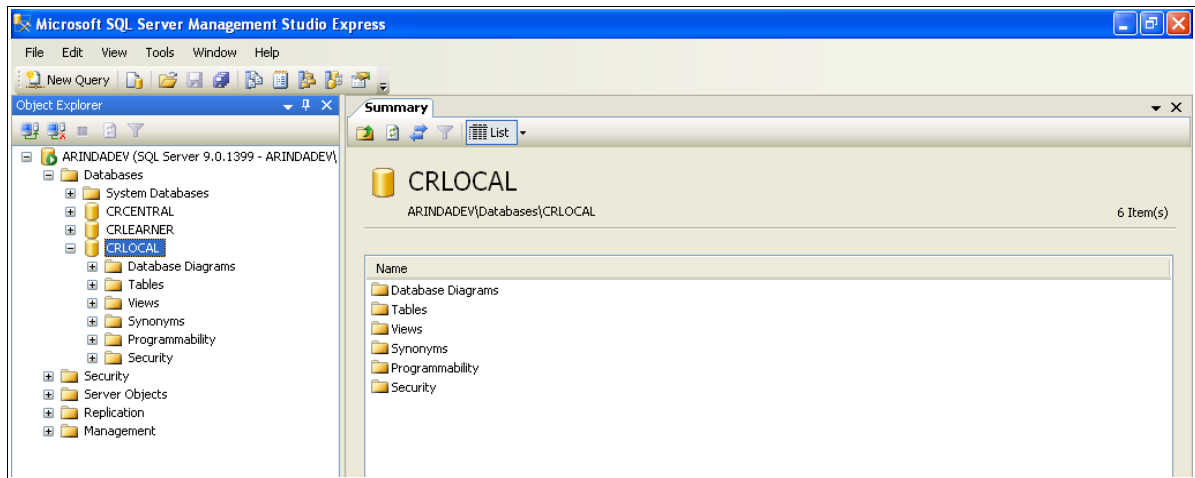


10. Select the file CRLOCAL.mdf (or yours may be CRPOS.mdf) and click OK
11. The screen should now look like this:



12. Click OK

13. The database should now be attached. To check this, make sure the database CRLOCAL now appears in the Object Explorer panel on the left hand side of the screen, underneath the Databases item, as shown in the picture below:



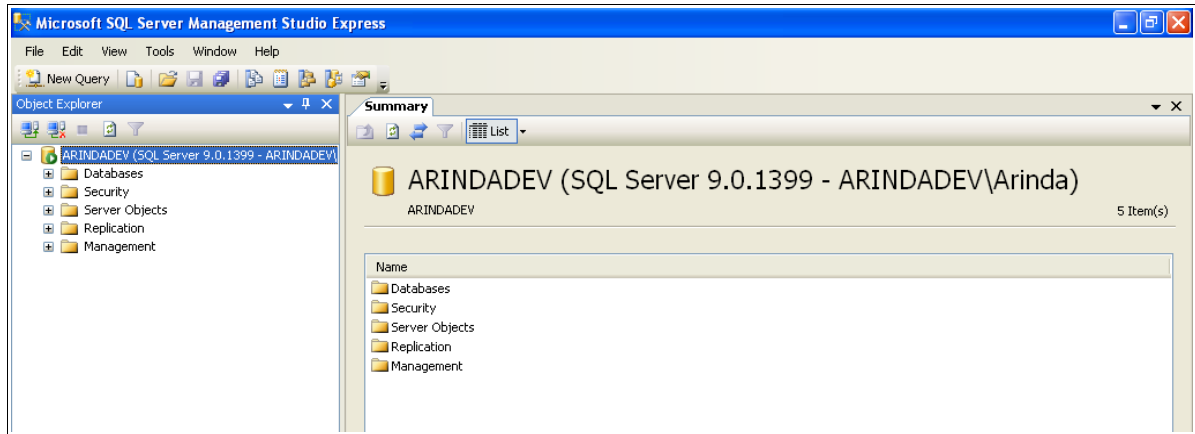
Step 5 – Open your database through the SQL Server Management Service Express

Now you can open and view your data by opening the SQL Server Management Service Express.

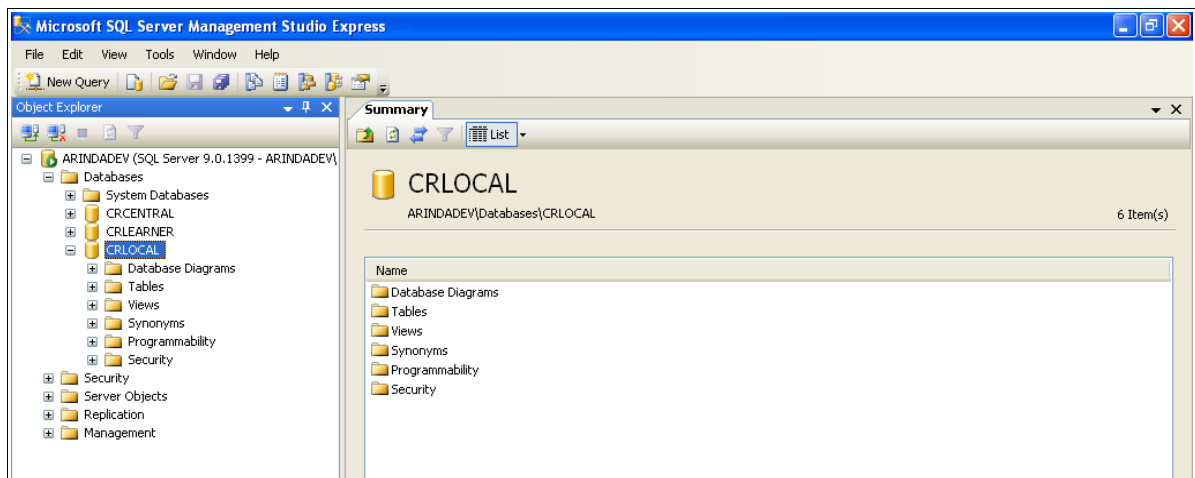
1. Go to the Start menu and open the menu item "Microsoft SQL Server 2005", then click on "SQL Server Management Studio Express CTP"
2. You should now see a window similar to the one below, but your computer name will appear in the Server Name field.



3. Simply press "Connect"
4. You should now see a screen similar to this one:



5. In the Object Explorer panel on the left hand side of the screen, tight click on the item "Databases" and drill down to the database "CRLOCAL"



6. This is your database. The data is stored in tables, located under the Tables item in the Object Explorer panel under CRLOCAL.
7. You should now refer to the separate manual regarding Database Tables and Structure.